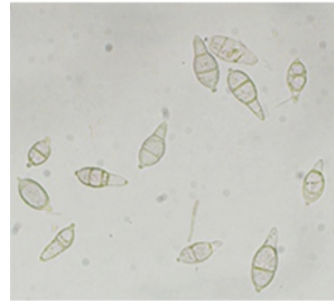
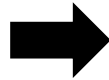


Method of inoculation with *Magnaporthe oryzae*



Place in moist chamber.



Spray with conidia suspension
(1×10^6 conidia/ml)



Incubate at 25°C
for 24 h under
dark.



Transfer in hydroponic culture.



Harvest at
1, 2, 3, 5 dpi.

Rice seedlings (4-leaf stage) were placed in moist chamber and sprayed with a conidial suspension of *M. oryzae* (1×10^6 conidia/ml). The seedlings were incubated in a moist chamber at 25°C for 24 h under dark condition, then grown in hydroponic culture under 14 h light (28°C) and 10 h dark (24°C). Leaf samples (4th leaf) from 3 individual experiments were harvested at 1, 2, 3, and 5 days post inoculation (dpi). Rice seedlings sprayed with water were used as control. The lesions manifested in leaves for each treatment are shown below.

Lesion manifested in leaves during sampling

